

STABILIZATION OF PARKING LOT BASE COURSE ON SHORELINE OF SAN FRANCISCO BAY

EMC SQUARED



Application of EMC SQUARED® Stabilizer

With historical soil contamination problems to deal with, an unpaved parking lot adjacent to San Francisco Bay that is frequented by windsurfers presented the City of Berkeley's Parks, Recreation & Waterfront Department with a challenge. When it came time to upgrade the parking area from a potholed gravel surface to a paved parking lot with a bathroom facility and artificial turf areas for windsurfers to set up their equipment, the biggest challenge for the Department's design engineers was the limited budget they had available. With plans to place a hot mix asphalt pavement surface course, regulatory agencies would allow the City to encapsulate the contaminated soils in

place as a stabilized base layer under the pavement. The cost of treating the soils with cement was prohibitive, notwithstanding the environmental concerns of treating soils located on the Bay Shoreline with such a highly alkaline chemical. The use of economical and environmentally friendly **EMC SQUARED** liquid stabilizer products supplied by Soil Stabilization Products Company, Inc. (SSPCo) solved their problems. Using the in situ soils, the existing gravel materials were incorporated in the upper of two nine-inch (9") stabilized lifts prior to placement of a three-inch (3") asphalt pavement on top of the stabilized layers.

Completed Project



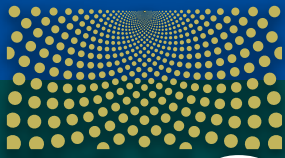
To learn more about Soil Stabilization Products Company and the EMC SQUARED System visit www.sspco.com

SOIL STABILIZATION PRODUCTS COMPANY, INC.

Ph: (800)523-9992 or (209)383-3296, Fax: (209)383-7849, Email: info@sspco.com

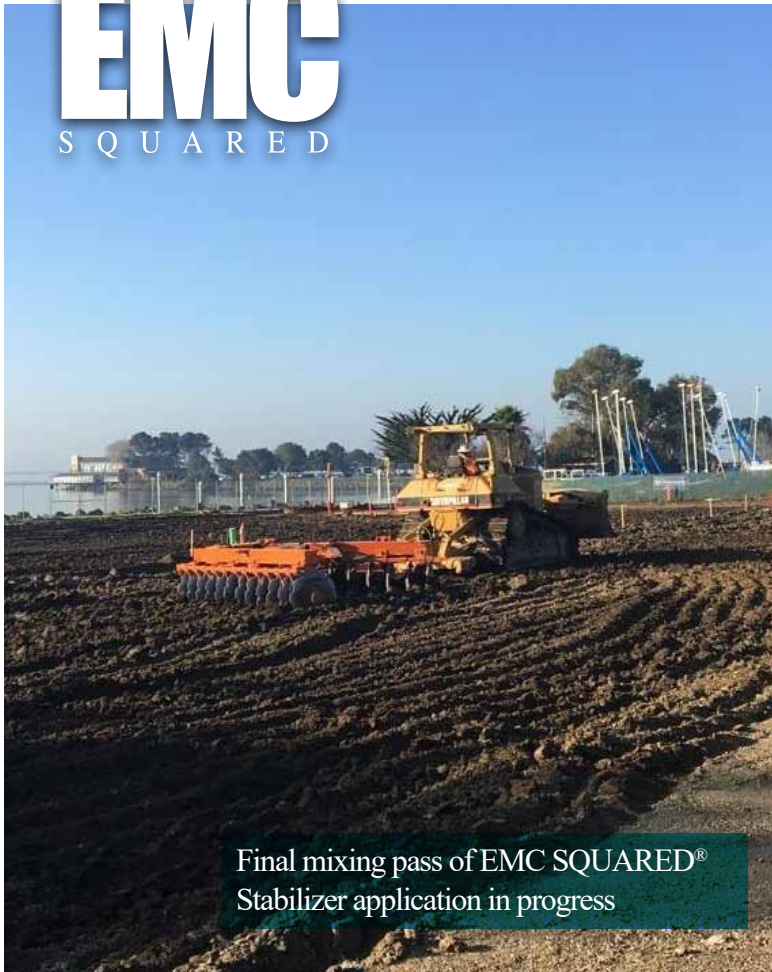


The SSPCo Globe and EMC SQUARED are registered trademarks of Soil Stabilization Products Company, Inc.
© 2018 Soil Stabilization Products Company, Inc. - All Rights Reserved



STABILIZATION OF PARKING LOT BASE COURSE ON SHORELINE OF SAN FRANCISCO BAY

EMC SQUARED



Final mixing pass of EMC SQUARED® Stabilizer application in progress

Previously evaluated as safe for use adjacent to sensitive coastal estuaries by a research study funded by the U.S. EPA's National Estuary Program (NEP), and highly effective at stopping the movement of water into treated soils, the **EMC SQUARED** System stabilizer products answered the call for this City of Berkeley project. Public agency engineers, consultants and contractors tasked with designing and building the highway embankments, dikes and levee structures that will be required around San Francisco Bay and throughout the Sacramento Delta to address Sea Level Rise would be well served to inform themselves in regards to how uniquely well suited the **EMC SQUARED** System stabilizer products are for these applications.



Parking lot and windsurfers' preparation area



To learn more about Soil Stabilization Products Company and the EMC SQUARED System visit www.sspco.com

SOIL STABILIZATION PRODUCTS COMPANY, INC.
Ph: (800)523-9992 or (209)383-3296, Fax: (209)383-7849, Email: info@sspco.com



The SSPCo Globe and EMC SQUARED are registered trademarks of Soil Stabilization Products Company, Inc.
© 2018 Soil Stabilization Products Company, Inc. - All Rights Reserved