

NORTH COCKRELL HILL ROAD DAMAGE ASSESSMENT

Comparison of EMC SQUARED System Subgrade with Cement Stabilized Base

Overview – The following is a January 2014 assessment of the 1.08 mile portion of North Cockrell Hill Road in Dallas, Texas south of IH 30 that extends from the intersection of Communications Drive on the north end to the intersection of West Davis Street/East Main Street on the south end. This section of road services a number of distribution centers and is noted for its heavy truck traffic.

Information Utilized – Photographs taken by Bob Boykin, TxDOT Dallas District Field Construction Engineer during December 2013 combined with current Google Map aerial and street views were used to formulate this assessment. Twenty 21 photos of the southbound lane (11” deep concrete pavement atop an EMC SQUARED System treated subgrade) and 28 photos of the northbound lane (11” deep concrete pavement atop a Cement Stabilized Base) were viewed. Google Map aerial data is 2013 vintage and Google Map street views are 2008 and 2011 vintage.

Types of Damage Observed - Below are the damage types that were observed:

Structural Cracks – This type of damage was categorized into lengths and labeled as offset (vertical or horizontal movement). Refer to Chart A following.

Concrete Patches – This damage type consists of areas that have been patched referencing photos provided by Bob Boykin. These areas have been categorized into square foot sized areas. Refer to Chart B following.

Damaged Curb or Curb Drain Structures – This damage type were labeled as “c” or curb damage or “cd” as curb drainage structures. Some of these have been repaired. Refer to Chart C following.

Damage Charts – The data from each type of damage has been entered into the following three charts A - C. The photos, tables and data used to produce the charts are all available upon request:

Chart A

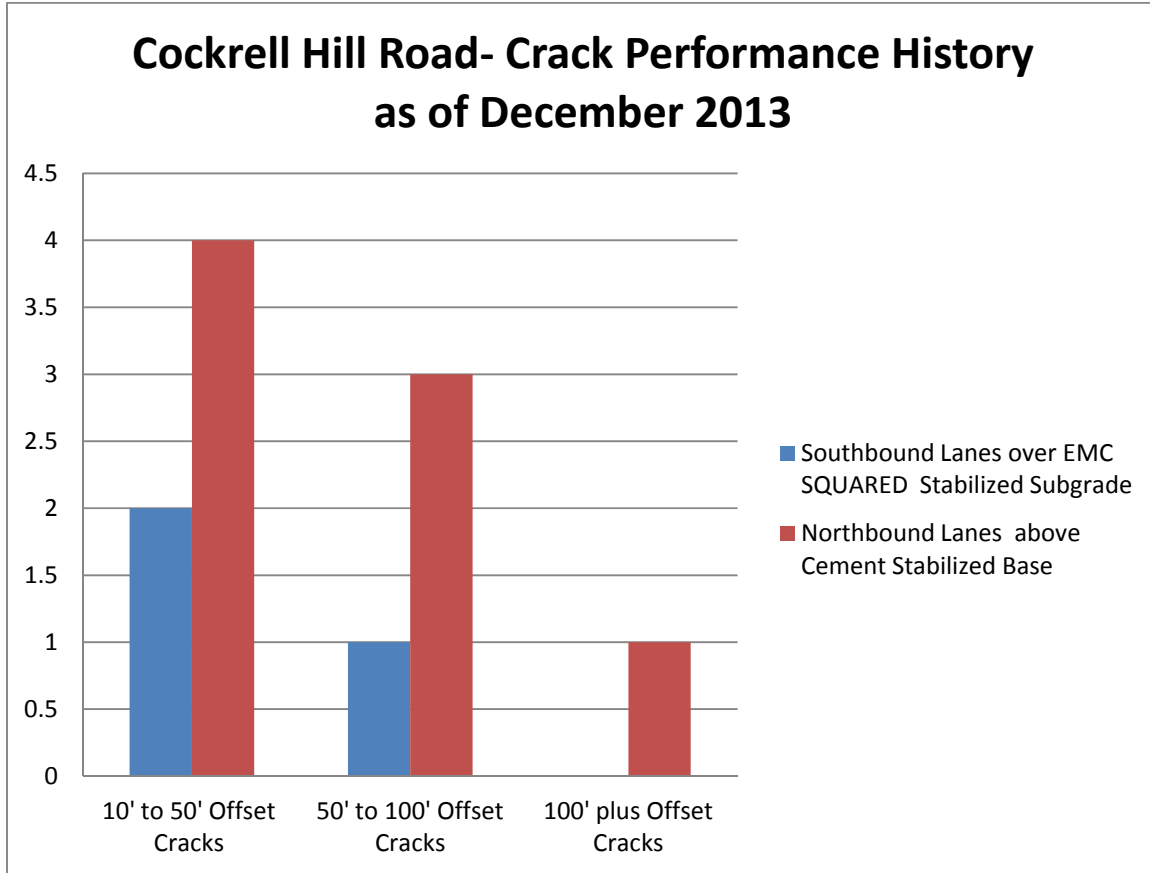


Chart B
COMPARING TOTAL AREA OF PATCH REPAIRS IN
SQ. FT. COCKRELL HILL ROAD

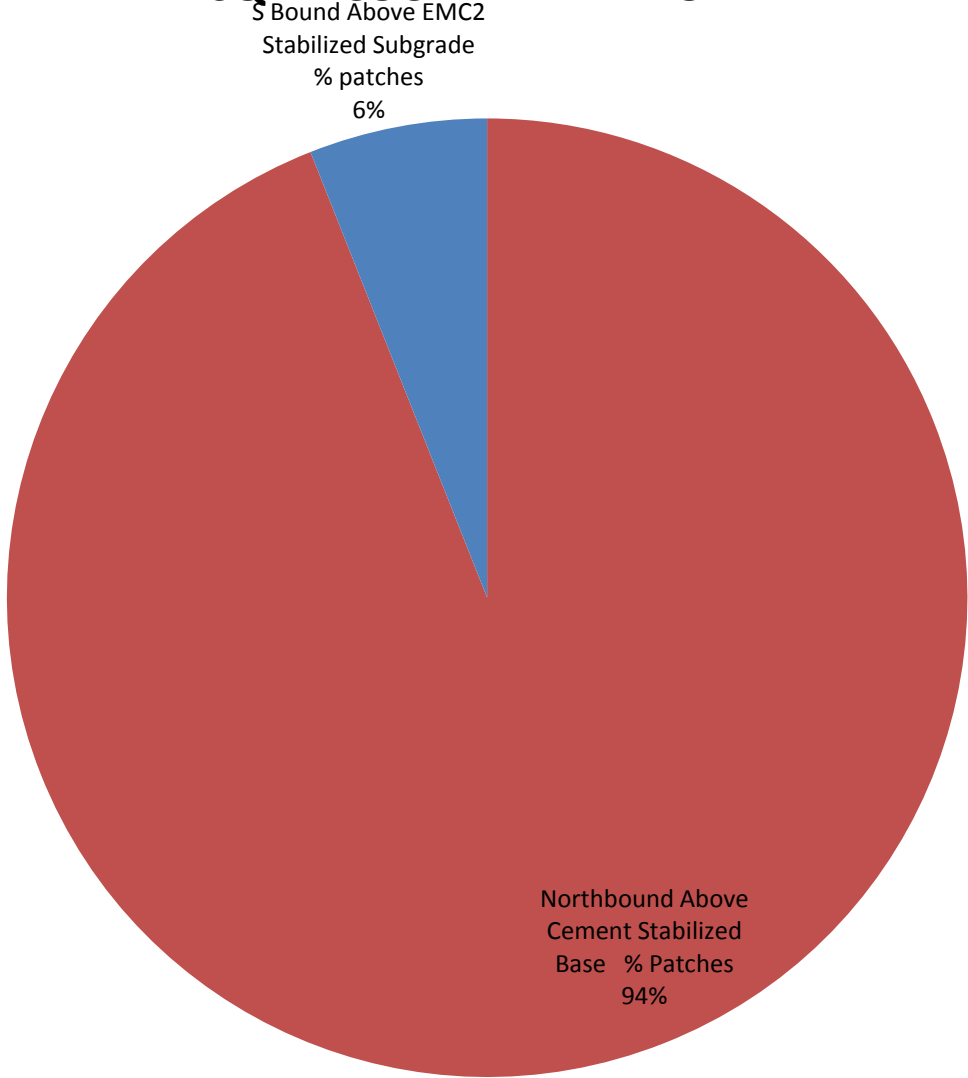
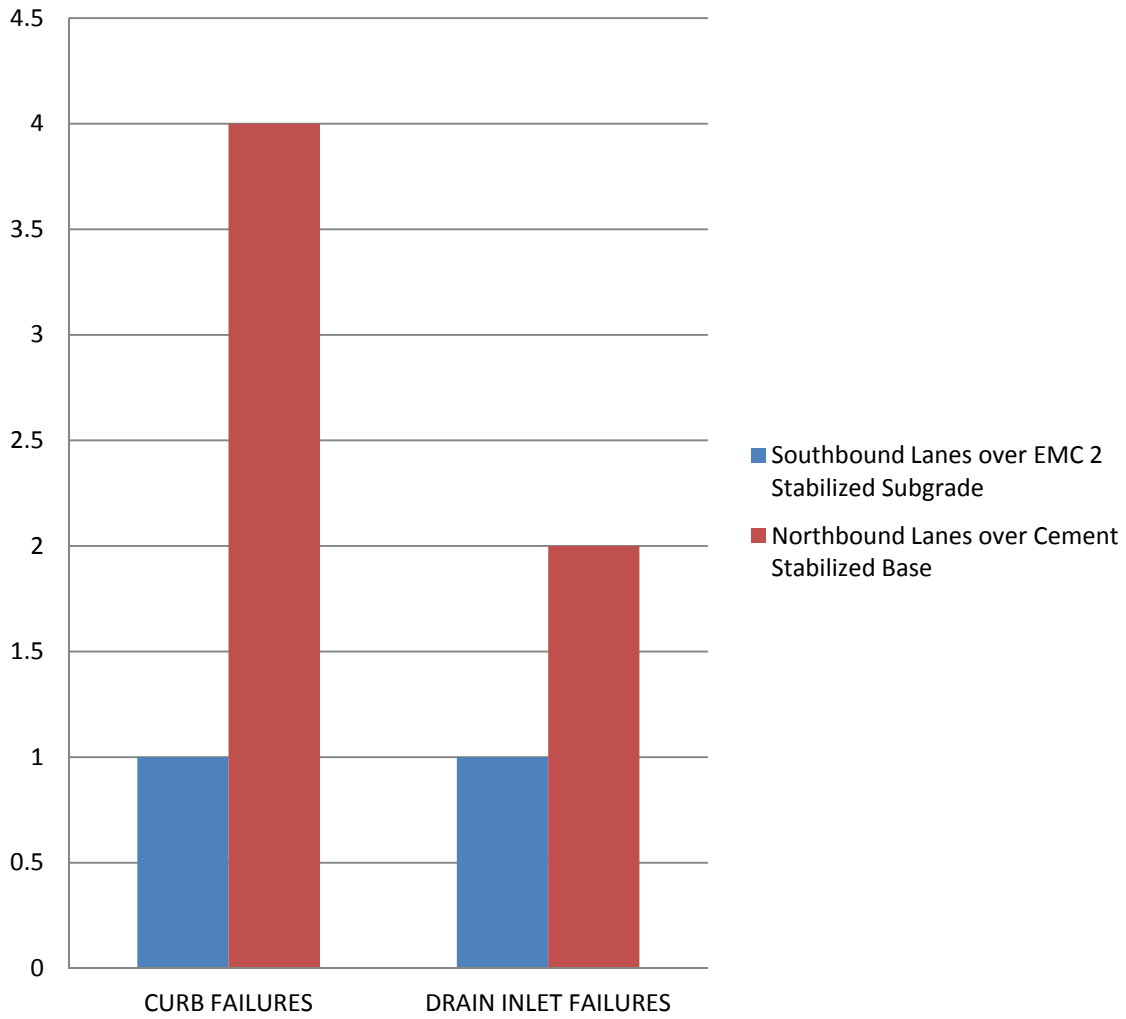
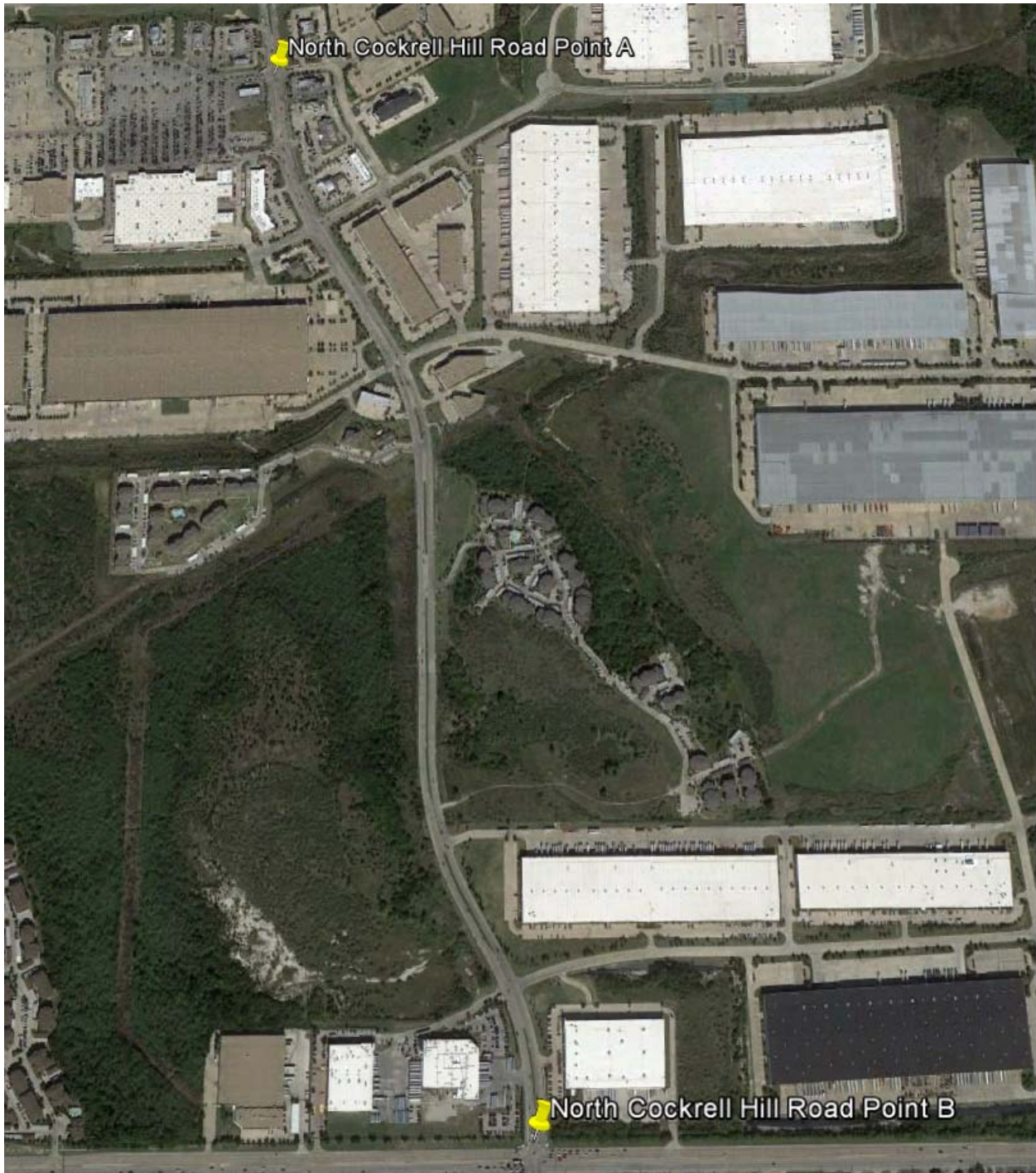


Chart C COCKRELL HILL ROAD CURB AND DRAIN INLET STRUCTURAL COMPARISON



EMC SQUARED® Stabilization
North Cockrell Hill Road, Dallas, TX



Point A

Latitude: 32°45'52.73"N
Longitude: 96°53'44.02"W

Point B

Latitude: 32°44'59.76"N
Longitude: 96°53'28.90"W